



Ryan Luedloff

Lighting Design Portfolio

LINDENWOOD
UNIVERSITY

REAL EXPERIENCE. REAL SUCCESS.

Programs and Apps

Proficient/ Advanced



Basic



[Title of Show]



Company: **Lindenwood University**

Venue: **Emerson Black Box Theater**

Director: **Ed Reggi**

Set Designer: **Josiah Haan**

Position: **Lighting Designer, Master**

Electrician, Programmer

Photos: **Katie Strzelec**



Pre-Show Look



Apartment Look



Monkeys and Playbills



Die Vampire, Die



Two Nobodies in
New York &
An original musical



Heidi & Susan, What Kind of Girl Is She?



A Way Back to Then



Misc



Awkward Photo Shoot



Finale

Matilda



Company: **Spotlight Productions**

Venue: **Rockwood Summit High School**

Director: **Sabra Sellers**

Set Designer: **Lily Tomasic**

Position: **Technical Director, Lighting &
Projections Designer**

Photos: **Russ Robins**

***WON 2022 Arts For Life Award**

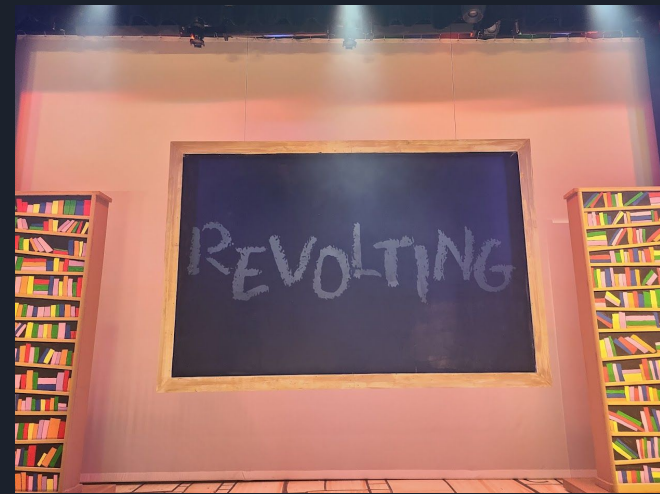
Best Youth Lighting Design*



Escapologist Stories & Projection Design



“The Hammer”



Chalkboard Projections



Classroom



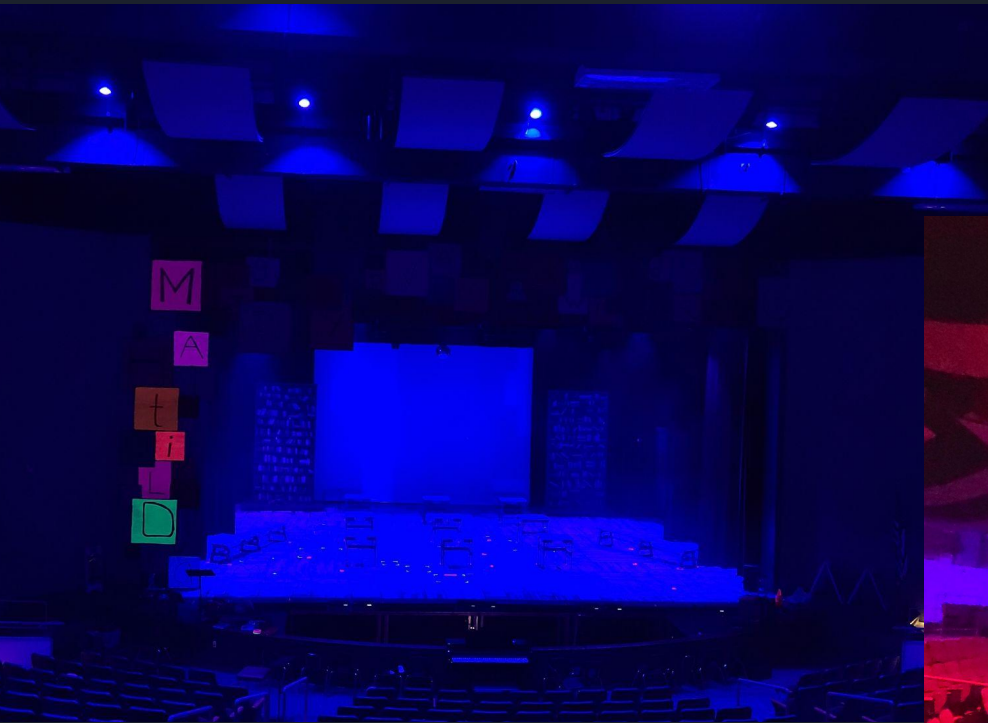
Library & Wormwood Home





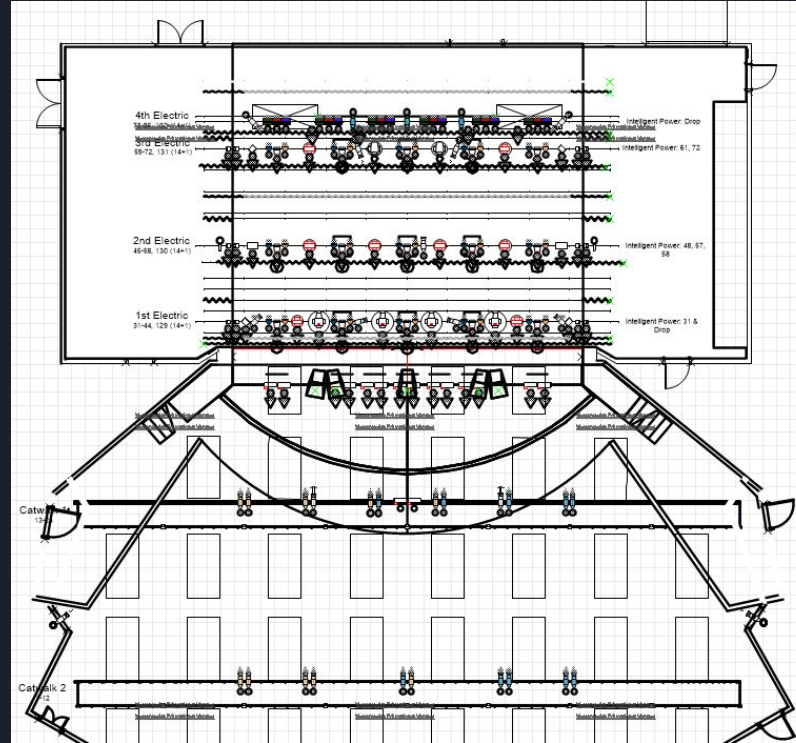
“Bruce”





Pre show Look & "telly" house lighting

Light Plot



Rent



Company: **Lindenwood University**

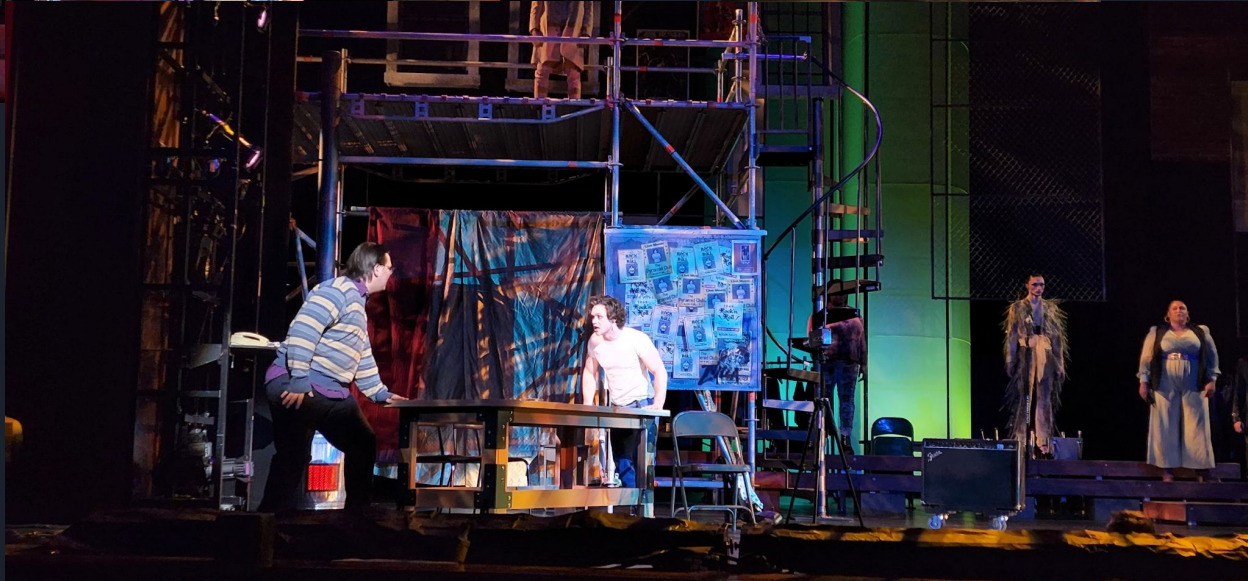
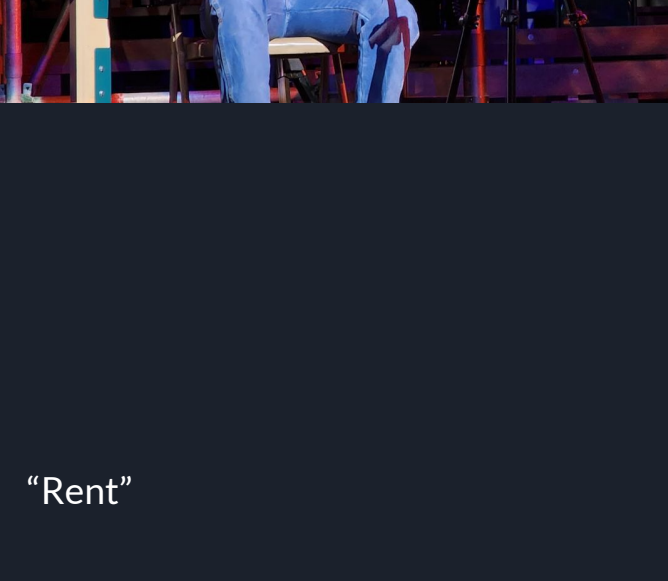
Venue: **J. Scheidegger Center for the Arts**

Director: **Phil Gill**

Set Designer: **Stu Hollis**

Costume Designer: **Tyler Holland**

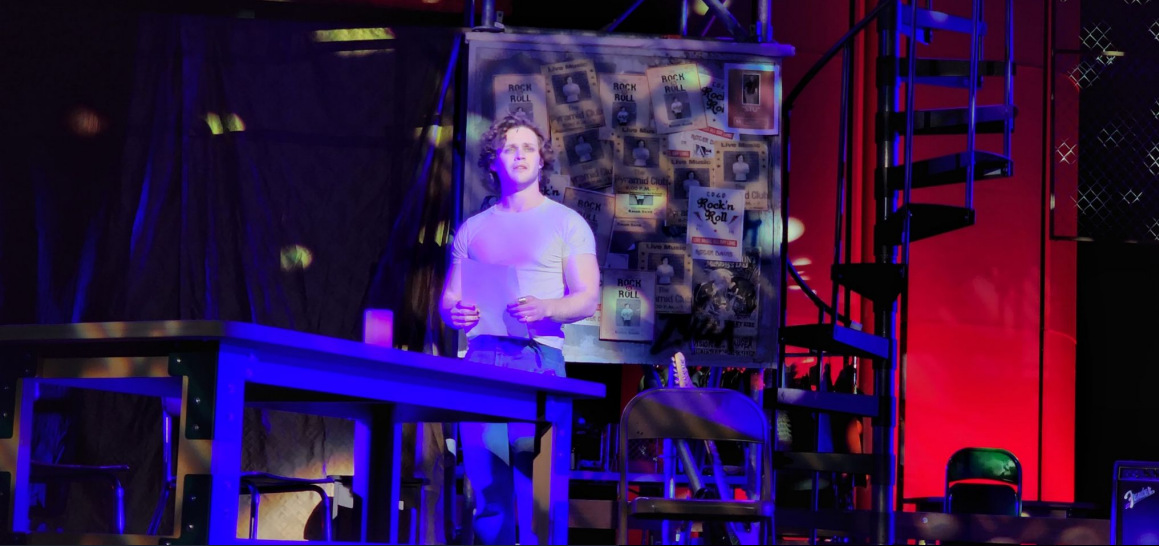
Position: **Assistant Lighting Designer &
Master Electrician**



"Rent"



“Rent”



“One Song Glory”





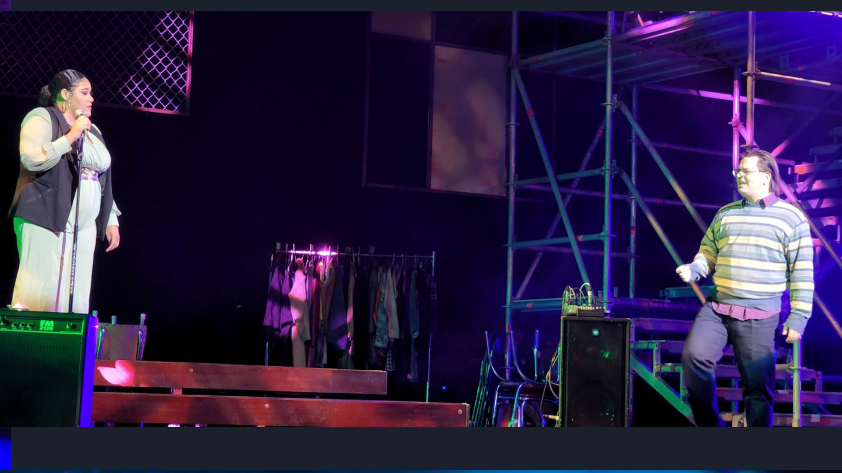
“Light My Candle”





“Today For You”





“Tango Maureen”





“Out Tonight”





“Over The Moon”





“La Vie Bohem”



“La Vie Bohème”





“I should tell you”



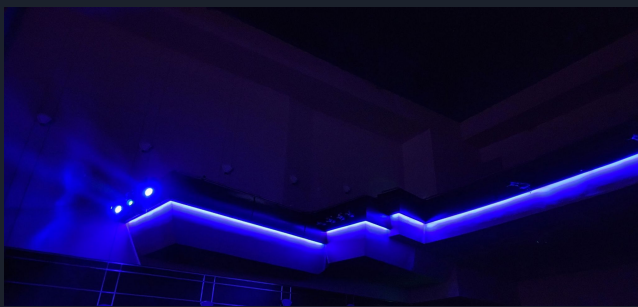


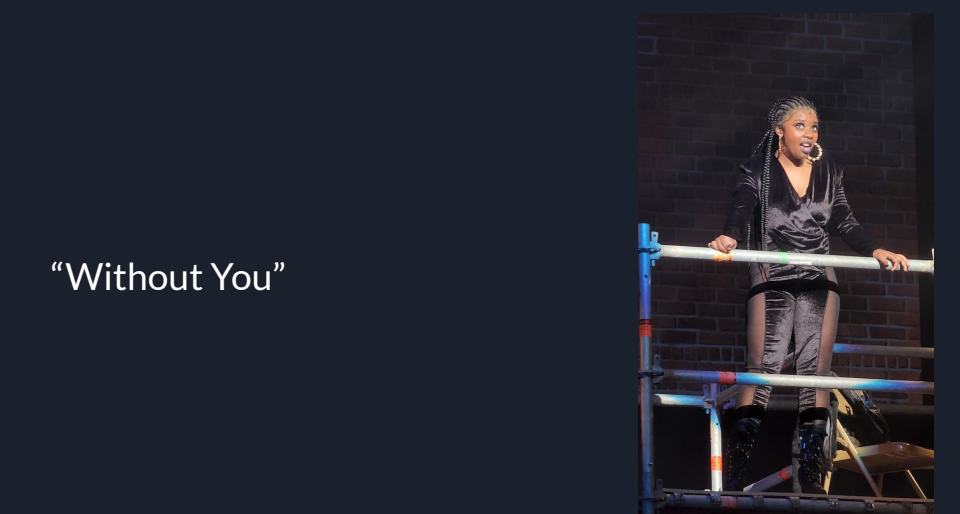
“Seasons of Love”





“Take me or leave me”

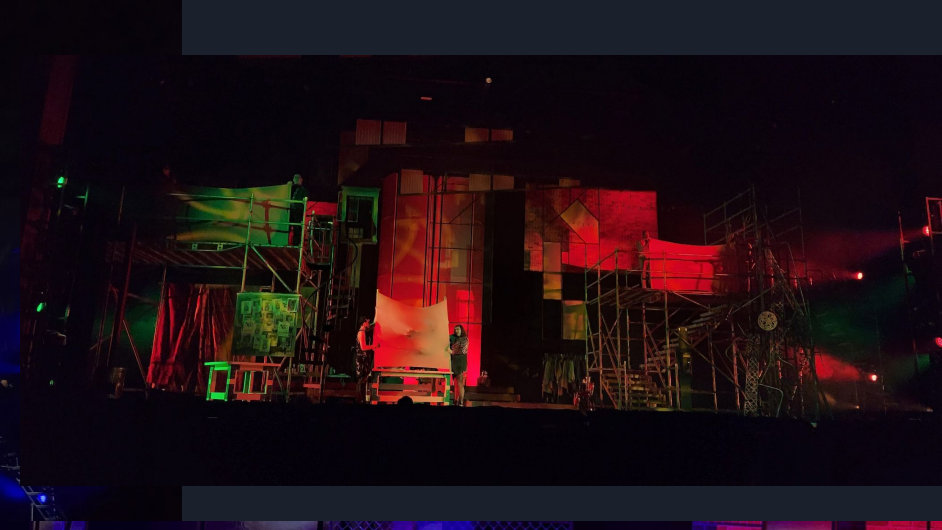




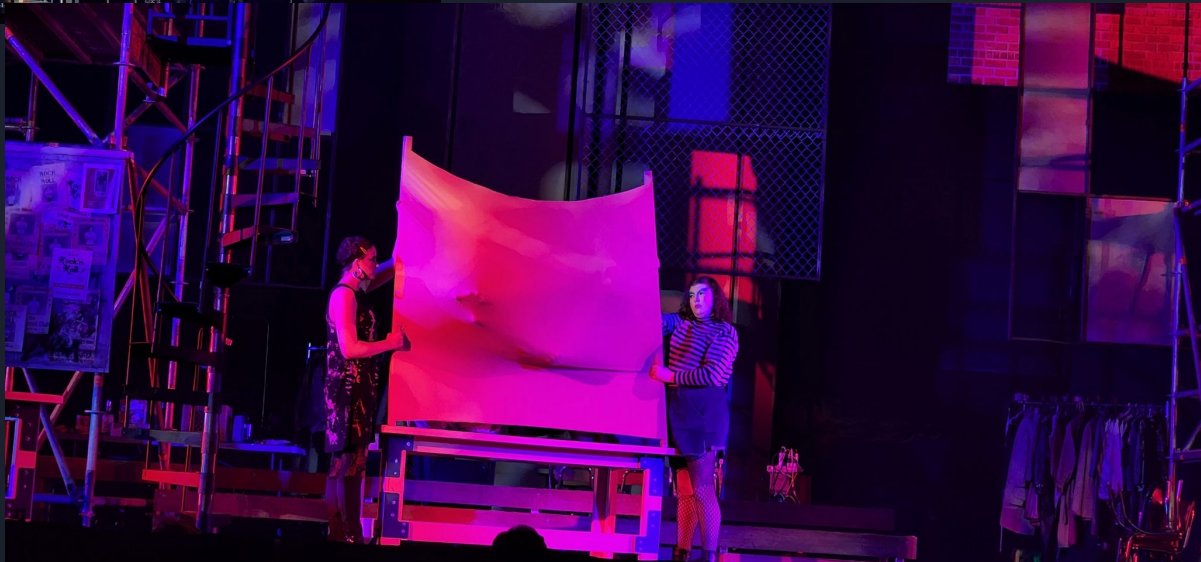


“Without You”





“Contact”



Puffs



Company: **Marquette Theater Company**

Venue: **Marquette High School**

Director: **Rebecca Blindauer**

Set Designer: **Mike Pisoni**

Position: **Technical Director, Lighting &
Sound Designer**











Legally Blonde



Company: **Marquette Theater Company**

Venue: **Marquette High School**

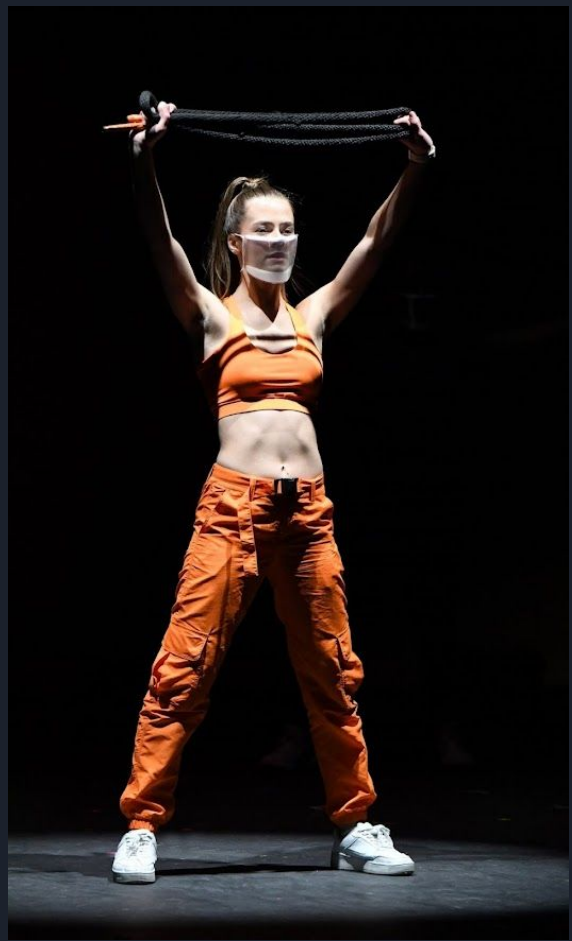
Director: **Rebecca Blindauer**

Set Designer: **Mike Pisoni**

Position: **Technical Director, Lighting &
Sound Designer**



“Legally Blonde”



“Whipped Into Shape”



Harvard Law School



“Gay or European”



“Gay or European”



misc



Hair Affair/ Bend & Snap



Hair Affair & Legally Blonde Remix

Newsies!



Company: **Spotlight Productions**

Venue: **Marquette High School**

Director: **Laura Fontana**

Tech Director: **David Kozinski**

Set Designer: **Meredith Duke & Lily**

Tomasic

Position: **Lighting & Sound Designer**



Pre & post show look







The Refuge



Scenic/ Atmospheric Enhancement





The unique shape of the theater, and the addition of truss lighting, allowed me to light the Theater walls and isles as an atmospheric enhancement used throughout the performance



Light Plot

Symbol Key




Light

-  Altman Sky Cyc 3 Cell
-  Chauvet COLORado 2 Quad Zoom Tour
-  Chauvet COREpar 80 USB
-  ETC Source4 PAR WFL

Moving Light

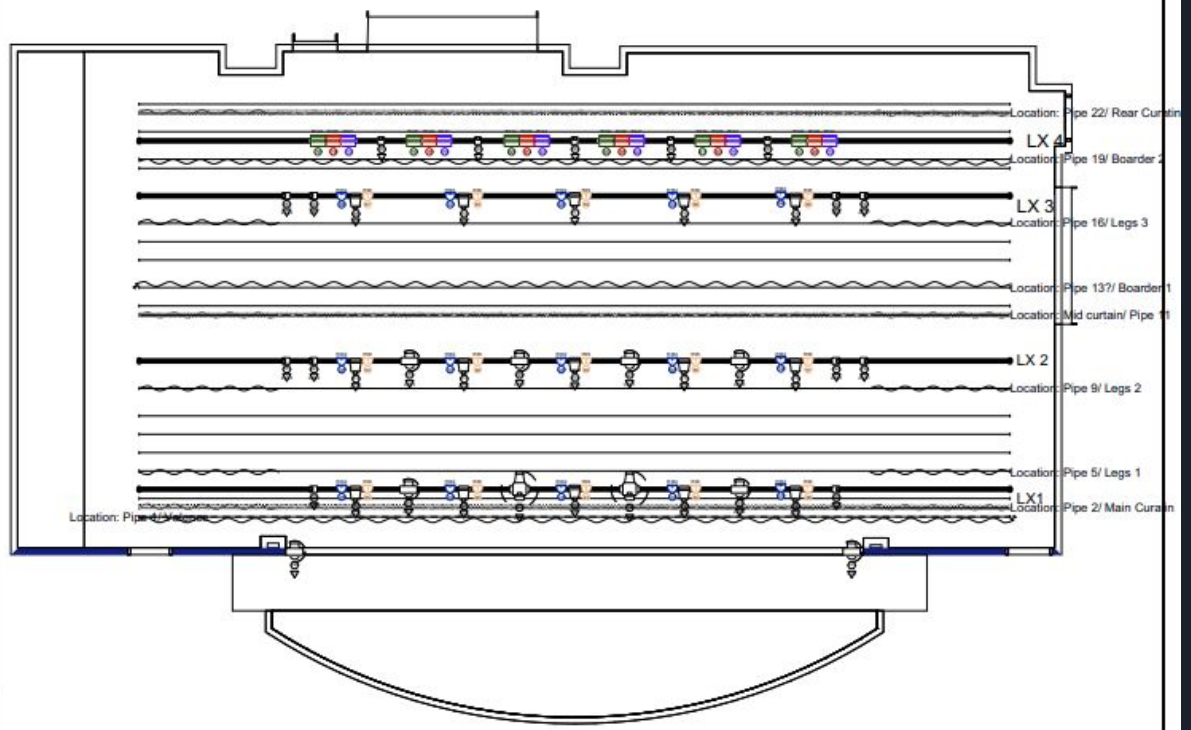
-  Varilite VL 1000 Tungsten dimmer
-  Chauvet Legend 4500

Typical


- Color
-  Dimmer
 -  Channel
 -  Universe/Address

Color Summary

Color	Size	Count
R09	7.5"	15
R120	14.5"	6
R121	14.5"	6
R122	14.5"	6
R384	7.5"	15



Current Date 12/8/2020	Newsies Spotlight Productions Marquette High School	Final Lighting Plot
Scale 1:128		
Lighting Designer: Ryan Luedloff		



Marquette High School “Variety Hour” (Covid-19 performance)



Company: **Marquette Theater Company**

Venue: **Marquette High School**

Director: **Rebecca Blindauer**

Position: **Lighting & Sound Designer,
Technical Director**

View full performance [here!](#)

Curtain Lighting



This show was performed during COVID-19. The director was struggling to find a way to change up the mood between each act that performed on stage. Come load-in time I decided to place our moving wash fixtures 3 feet apart along the bottom of the curtain instead of hanging the fixtures on my electrics. The first time I tested the look, the director and I fell in love with it. It added a special pop and eye candy to the show which highlighted the acts very well. It took the boring black out of the curtain and added in something more fun and practical. It also allowed me to conduct some aerial effects

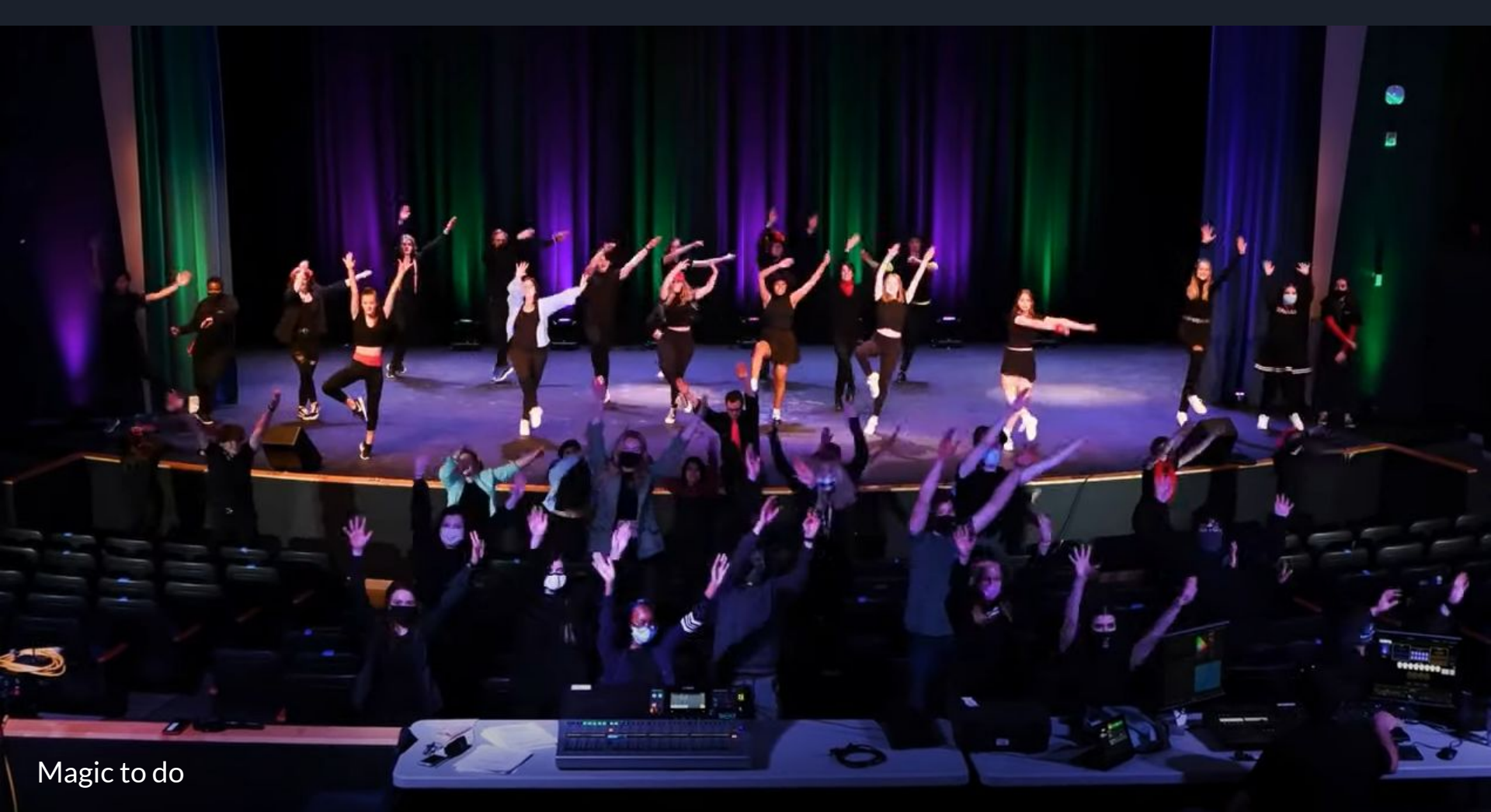


This photo was used to advertise the show, and included the school colors.





Mamma Mia



Magic to do

Turkey Lurkey





Suddenly Seymour







Turkey Lurkey

Light Plot

Vectorworks Educational Version

Symbol Key

Light

-  USITT Moving Wash
-  Chauvet COLORado 2 Quad Zoom Tour
-  ETC Source4 PAR WFL
-  USITT E3_5x6



Moving Light

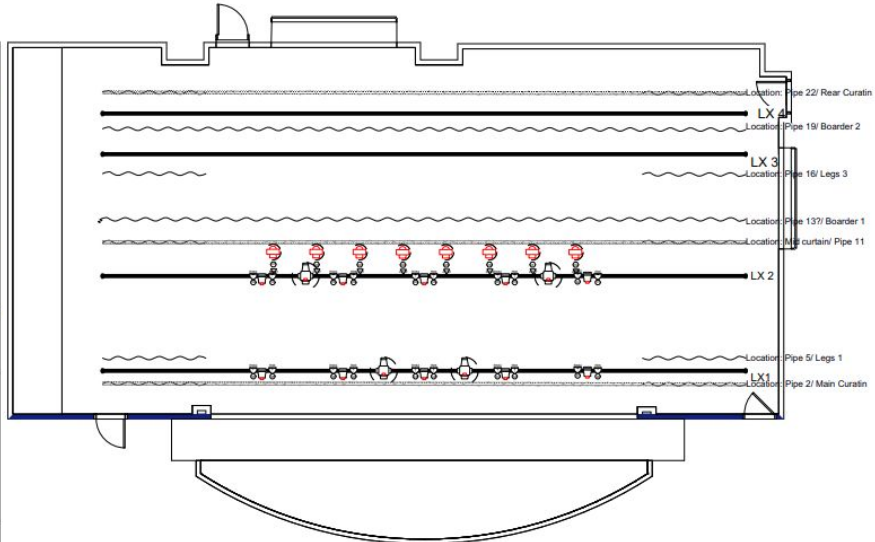
-  Varilite VL 1000 Tungsten dimmer

Typical



Color Summary

Color	Size	Count
 R06	7.5"	10
 R384	7.5"	10



1 Electrics
Scale: 3/32" = 1'-0"

Current Date 12/8/2020	MHS Variety Hour	Final Lighting Plot
Scale 1:128	Marquette Theatre Company Marquette High School	
Lighting Designer: Ryan Luedloff		

Vectorworks Educational Version

Intimate Apparel

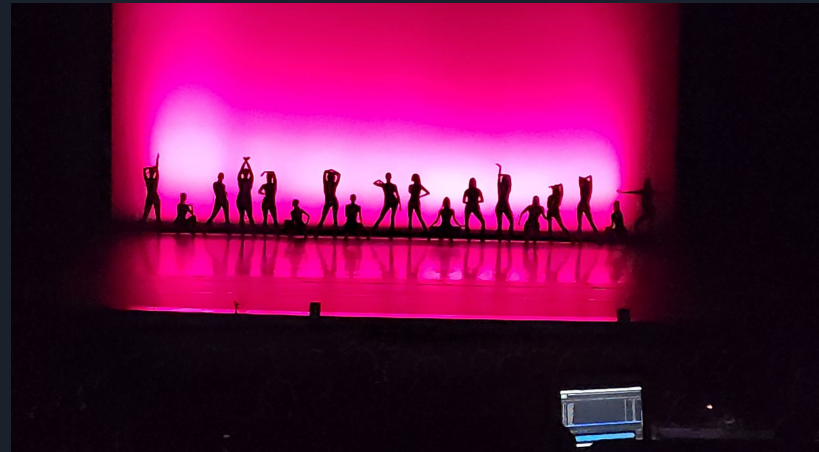
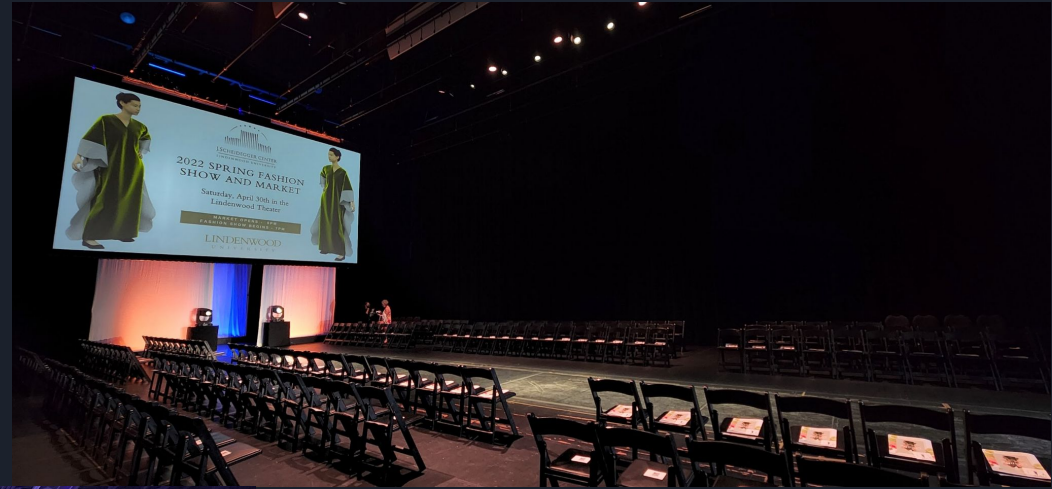


Company: **Lindenwood University**
Venue: **Lindenwood University Black Box**
Director: **Jackie Thompson**
Lighting & Scenic Designer: **Stu Hollis**
Position: **Master Electrician &
Programmer**

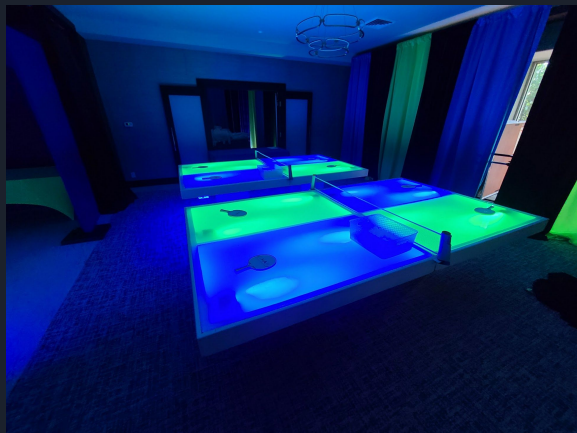


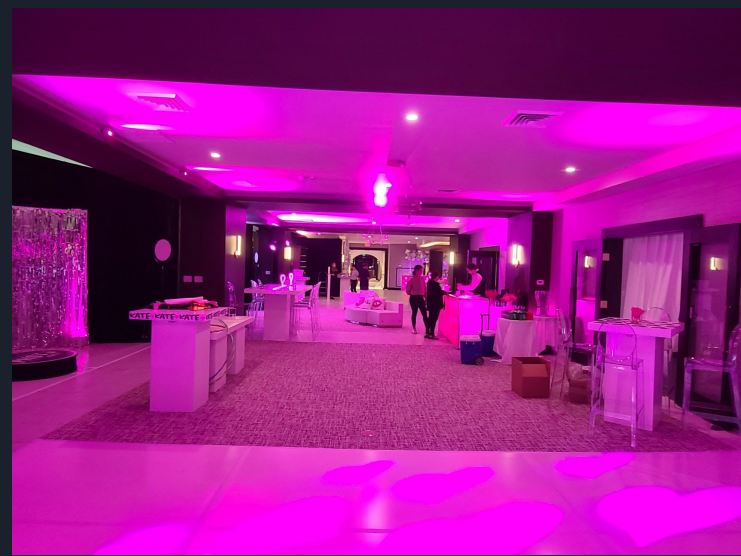
Misc Freelance Events











Website & Social Media

<https://www.luedloff-lighting.com/>



@luedloff_lighting



@luedloff.lighting